

PVC Plinth - EX15

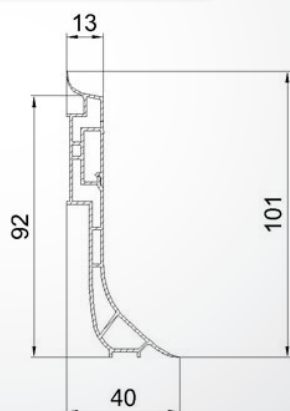
T.1.00



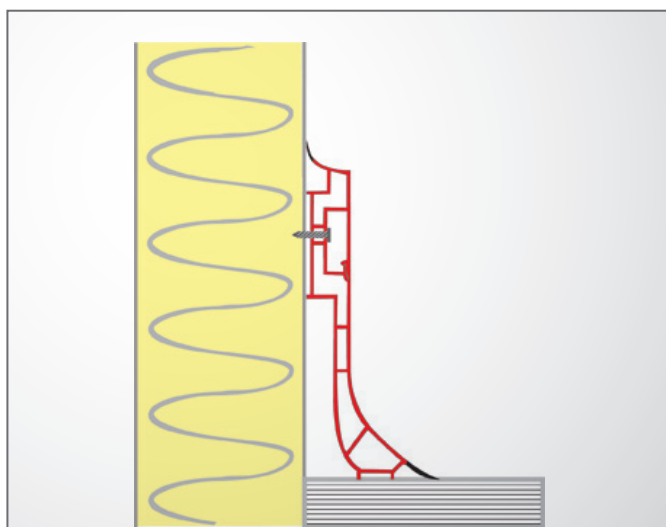
APPLICATION

Skirting profiles for hygienic finishing between vertical panels and ground surface, in cold- and cleanrooms.

TECHNICAL DRAWINGS



all dimensions are in mm



PRODUCT INFORMATION

Product Range:

Castel COOL

Product Group:

Plinth Profiles

Ref	Description
0605.00001.037	Plinth EX15 9002 - L=4m
0605.00001.040	Plinth EX15 9010 - L=4m
0605.00001.041	Plinth EX15 9010N - L=4m

STANDARD COLORS

Standard colors: **9002, 9010 and 9010N**

Availability on request: 9006

MATERIAL

Rigid PVC + soft PVC for edges

ADVISED WORKING TEMPERATURES

Temperature range: between -30°C and +60°C in a static position

RELATED PRODUCTS

Accessories: INJ21 - INJ31 - INJ91 - INJ88

ATTACHMENTS

Solvay Benvic's certificate:

Rigid PVC-profiles destined to the construction of cold storage rooms for conserving alimentary goods.

PVC Plinth - EX15

T.1.00

ORDERING INFORMATION

Ref	Commercial Ref.	Length	Color	Packing Box	packing Pallet
0605.00001.037	EX.15 9002	4 lm	9002	80 lm	1280 lm (420x110x85cm)
0605.00001.040	EX.15 9010	4 lm	9010	80 lm	1280 lm (420x110x85cm)
0605.00001.041	EX.15 9010N	4 lm	9010N	80 lm	1280 lm (420x110x85cm)

other configurations: contact us

STORAGE

Product is required to be stored in its original packaging, in a dry location sheltered from the weather conditions. Advised storage temperature range: +10°C and +50°C

MOUNTING

Product must be handled and installed only by a professional. Admissible temperature range for installation: between +10°C and +50°C

DISCLAIMER

Castel Engineering, Rue de la Royenne 84, B-7700 Mouscron, Tel +32 (0) 56 33 68 40 - Fax. +32 (0) 56 33 78 10
Copyright © 2015 Castel Engineering - All rights reserved.

Castel Engineering and its Affiliates' liability terminates when the original packaging in which the product is contained, has been opened or damaged. Castel Engineering and its Affiliates' warranty is exclusively limited to providing a product of quality conform to their technical specifications.

Those who in any way utilize the product(s) are solely responsible for determining (a) the suitability of the product for the intended use, (b) the appropriate manner of processing and maintaining the product to ensure safety and quality and (c) chemical, physical and health effects related to those activities, (d) to inform themselves in order to be able to decide if specific tests are necessary for their intended use* in respect to norms and regulations in application at the location of their intended use*.

The product should be installed with respect to possible climatic and seismic conditions when in use and during the installation and in conformity to the installation instructions and recommendations of the manuals of the air conditioning device.

The qualified installer is supposed to have professional knowledge

Appropriate tools and materials for installation and for maintenance must be selected and used according to the professional know-how, in respect with the nature of our products and in compliance with all procedures and regulations in application at the location of installation.

All above parameters, factors, operations, regulations, compliances and procedures are totally beyond Castel Engineering sa and its Affiliates' control.

By selling this product Castel Engineering sa and its Affiliates acts in a simple sale - purchase transaction.

Castel Engineering and its Affiliates disclaim any and all responsibility and liability for the use of any such data, information and/or the relevant product.

All dimensions in this document are in mm unless otherwise specified. (Tolerances apply)

* See application

ATTACHMENT



SOLVAY
BENVIC & Cie - **BELGIUM**

Benvic[®]
Blends & Alloys

Brussels, 31 octobre 2002

Certificate

**Rigid PVC-profiles destined to the construction of cold storage rooms
For conserving of alimentary goods.**

Legislation with respect to the non-toxical plastic materials concerning objects, wrappings, recipients and tubes, destined to be in contact with alimentary goods and having the purpose of guaranteeing the absence of migration of toxical components, eventually present in the plastic materials or in the alimentary goods with which they are in contact.

This is especially the case with the European Directive 90/128/CEE

In the present case, it concerns the constructive elements which are not included in this definition.

Nevertheless it is necessary to assure oneself that the PVC-profiles used for the construction of cold storage rooms do not contain any risk with respect to the stocked alimentary goods, whether it is by gaseous redemption, or by migration at occasional contact with the alimentary goods.

We can guarantee that there will be no risk at all: The additives present in the PVC-profiles are all solid ones not susceptible to sublimate and not susceptible to migrate by occasional contact with stocked solid alimentary goods which are kept at a low temperature in cold storage rooms.

SOLVAY BENVIC & Cie - BELGIUM S.N.C.
Siège Social : rue du Prince Albert, 44 - B-1050 Bruxelles - Belgique - Tél. + 32 (0)2 509 61 11 - Fax + 32 (0)2 509 76 60 - <http://www.solvay.com>
T.V.A. BE 461 989 125 - R.C. Bruxelles 619212 - Fortis Banque 210-0047404-23
Siège d'exploitation : rue Solvay 39 - B-5190 Jemeppe-sur-Sambre - Belgique - Tél + 32 (0)71 26 81 69 - Fax + 32 (0)71 26 81 36
T.V.A. BE 461 989 125 - R.C. Namur 73510 - Fortis Banque 250-0178325-27

25/03/01